

## What happens if the companion needs assistance, or their care needs change after moving in?

In the event that the companion requires assistance, the individual is required to make arrangements for an external agency (Home Care, Home Instead, VON) to make in-house visits. Should the companion be assessed as needing Level 3 or 4 care and the following 3 conditions exist:

- Resident/companion (family support) agree and desire to remain together;
- Mutually beneficial for both residents' health and well-being;
- It is safe for both residents/staff to provide care in existing suite,

then the resident and companion may remain in a Companion Suite and agree to pay \$600 in addition to the 2 resident income assessed portions.

We are a Catholic health care facility where care is compassionate, resident-directed, safe and respectful. We advance the healing and caring ministry of Jesus Christ by responding to needs of the spirit, mind, body and culture of those who enter our home. Our actions are guided by our belief in human dignity, compassion, holistic care, spirituality, collaboration and integrity.

Samaritan Place 

375 Cornish Road  
Saskatoon, Saskatchewan S7T 0P3  
Tel: 306-986-1460 Ext 0 · Fax: 306-986-1464  
Email: [reception@samaritanplace.ca](mailto:reception@samaritanplace.ca)

[www.samaritanplace.ca](http://www.samaritanplace.ca)

Samaritan Place 

# Companion Living

A home where residents and companions can remain together in the privacy of their own suites



## Why live at Samaritan Place?

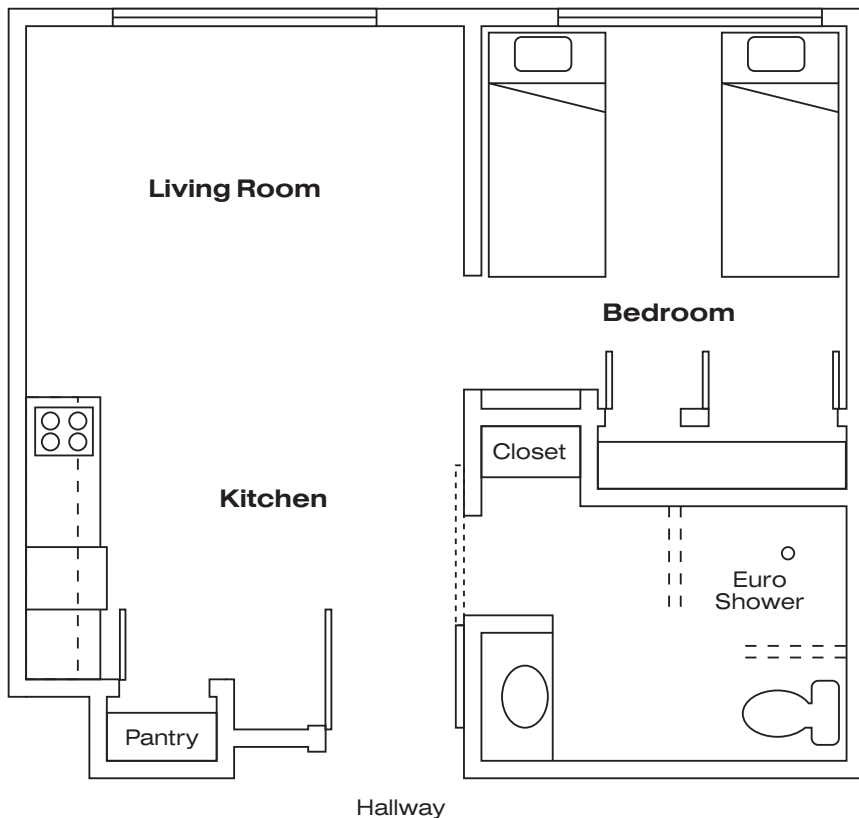
The uniqueness and character of Samaritan Place reflects the choices of individuals who call this their home. A resident and companion choose to live at Samaritan Place together in the privacy of their own suite, while being assured that the care needs of the resident are being met. Companion Suites are available when only one individual is assessed by CPAS as needing Level 3 Long-Term Care. The companion can live in the suite 100% of the time or can stay when they choose.

## Move-In Process

To live at Samaritan Place, just like other special care homes, the resident must apply with Client Patient Access Services (CPAS) in the Saskatoon area or with the Home Care Client Coordinator in the rural areas of the Saskatchewan Health Authority. If the resident already lives in a Special Care Home, you can request a transfer to a Samaritan Place Companion Suite by calling CPAS at 306-655-4346.

## Companion Suite Details

- 20 suites, approximately 650 square feet
- Suites are integrated with first/second floor single suites
- 1 bedroom and bathroom off kitchen/living room combo
- Bedroom can accommodate 2 single beds, or one queen (depending on resident care needs)
- Bathroom contains European shower
- Kitchen contains built-in cupboard storage, refrigerator, microwave and stove



**Companion Suite**

## How much will it cost the Companion, and what is included?

Resident rates are set by the provincial government and are based on income of the individual assessed as needing long-term care services. The Companion Suites are designed for 2 individuals, and both individuals will pay a fee. The individual requiring long-term care will pay the base fee set by the government, which includes rent, meals, laundry, housekeeping and personal care. The companion will pay 95% of the base fee.

This 95% companion fee includes:

- Rent
- Housekeeping
- Free access to laundry facilities

Not included (\* optional services for additional fee):

- Care staff may not provide any assistance to companions
- Companion bed or any other furniture
- Laundry (\* \$50/week)
- Meals (\* \$12/day)
- Parking (\* \$40/month)
- Cable/Phone (\* each suite responsible for their own arrangements)

\*\*For the most up to date information regarding increases to resident charges, see the following Ministry of Health website: [www.saskatchewan.ca/residents/health/accessing-health-care-services/care-at-home-and-outside-the-hospital/special-care-homes](http://www.saskatchewan.ca/residents/health/accessing-health-care-services/care-at-home-and-outside-the-hospital/special-care-homes)

## What happens if the resident no longer resides at Samaritan Place?

At the time of move-in, the companion must provide an alternate living arrangement. In the event that the resident vacates for any reason, the companion will be expected to vacate the suite within 3 days. Commencing on the 4th day (and only if the suite is not in demand) the companion may stay for a mutually agreeable number of days at an additional \$50/day.